

Photo 3: SAVANNAH four seconds after photo 1.

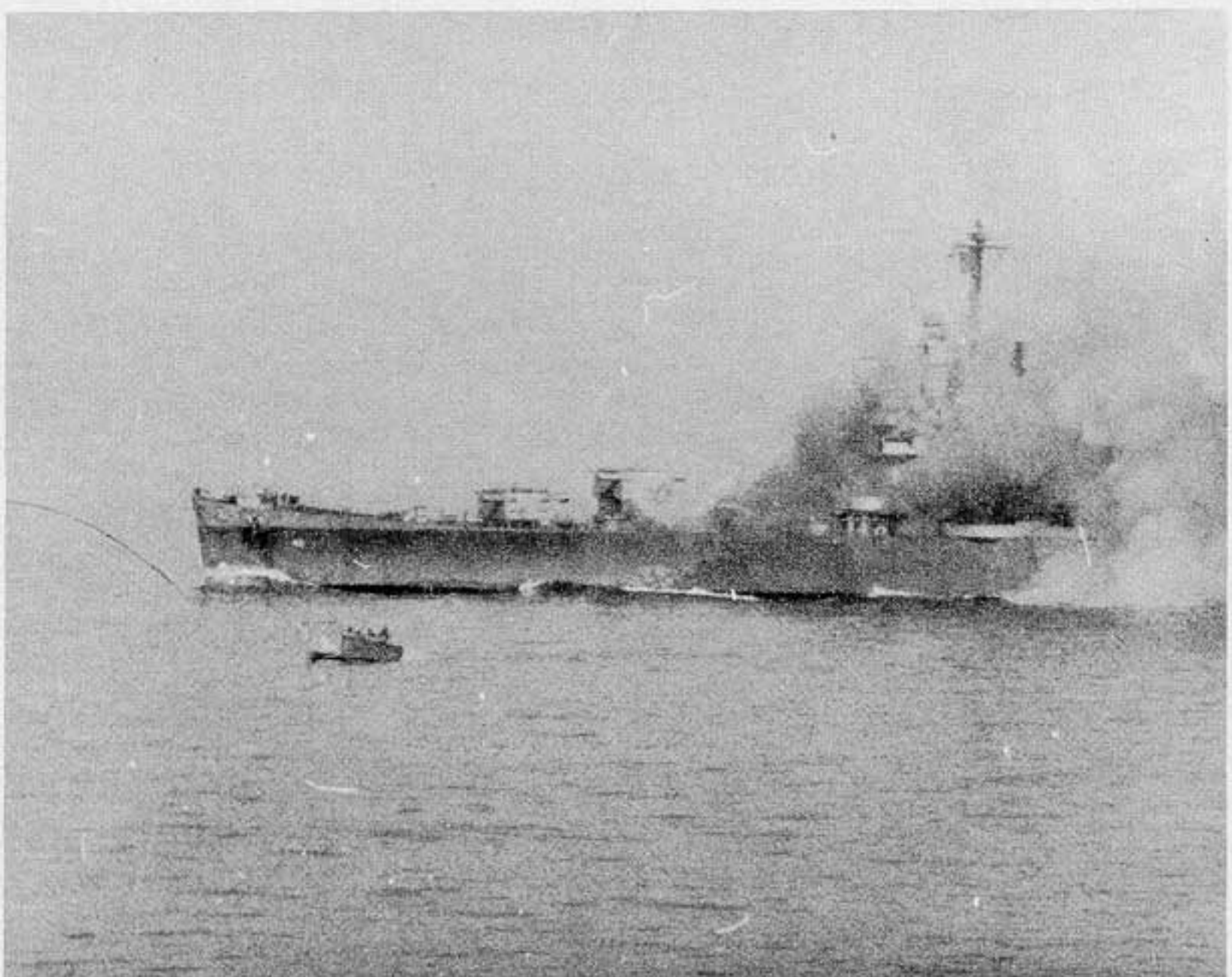


Photo 4: SAVANNAH six seconds after photo 1. Smoke is beginning to pour from No. 3 turret.



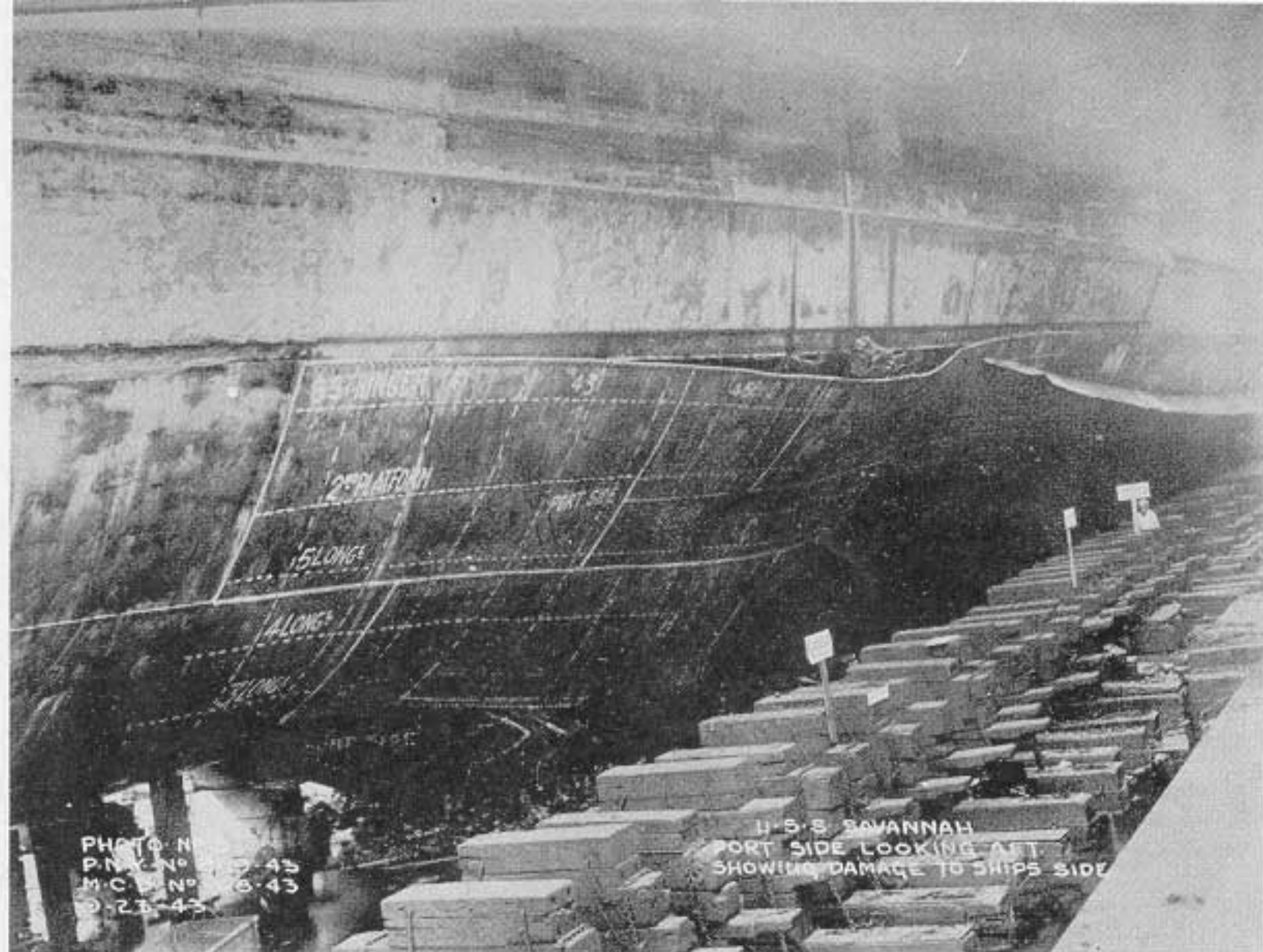


Photo 7: In drydock at Malta - damage to port shell below the armor belt.

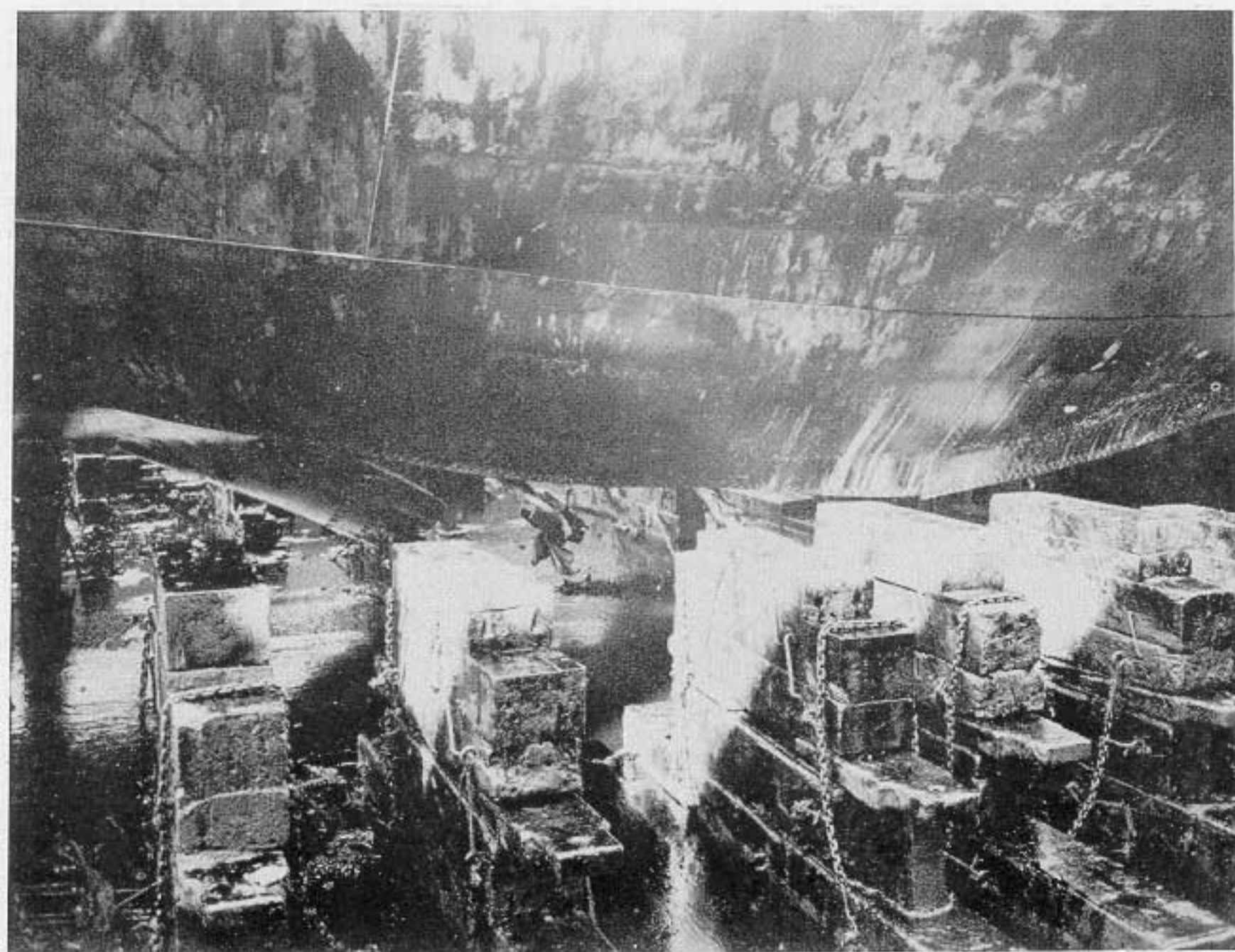


Photo 8: In drydock at Malta. Looking to starboard at hole in bottom, frames 44 to 50. Plate extending down is A strake which had 15 feet, extending down at a 45 degree angle, cut off by diver prior to docking.