

Photo 15: Compartment A-314-2L, third deck to starboard of No. 3 barbette. Note waterline and evidence of fire.

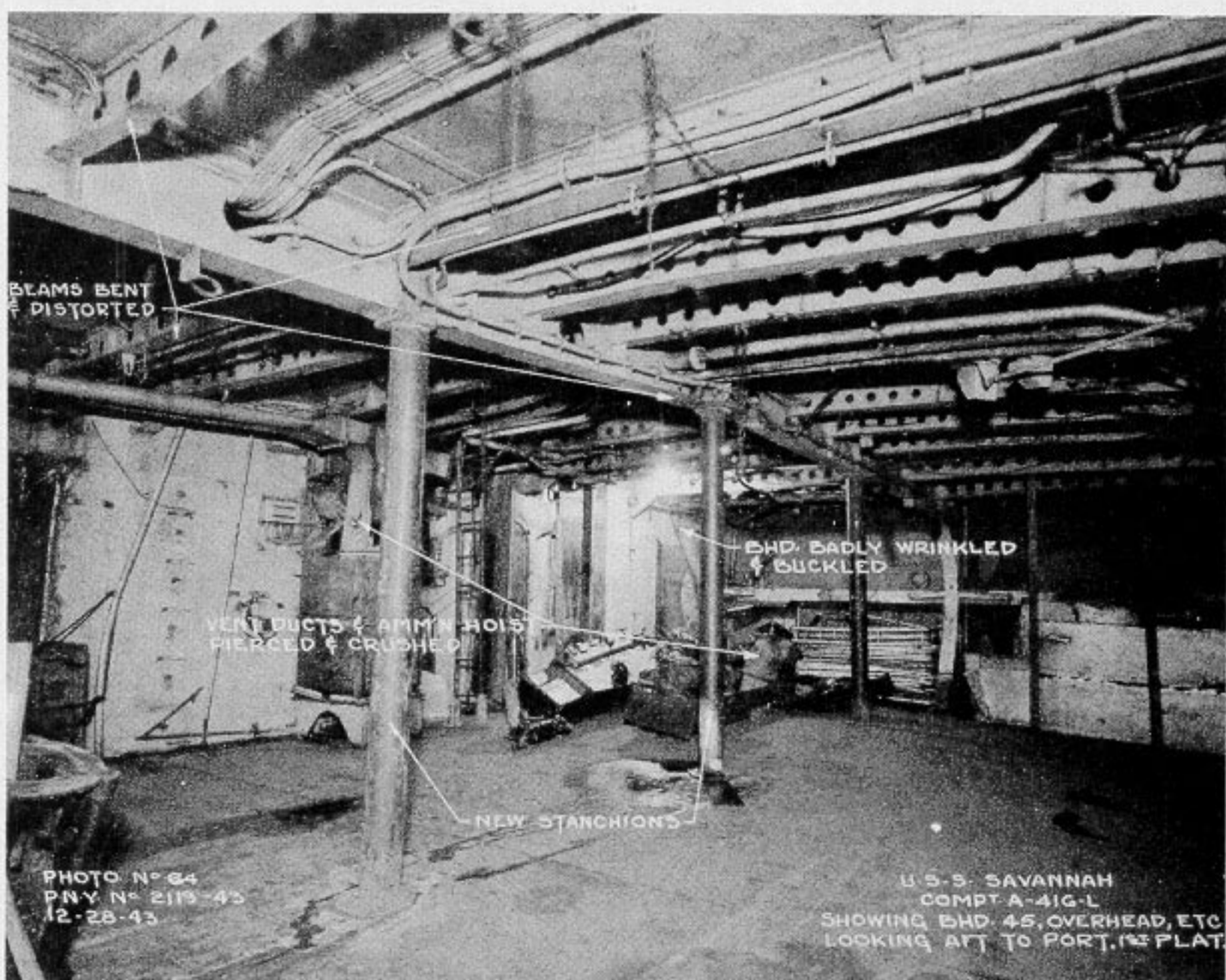


Photo 16: Compartment A-416-L, first platform, frames 39 to 45. Looking aft and across to port shell.



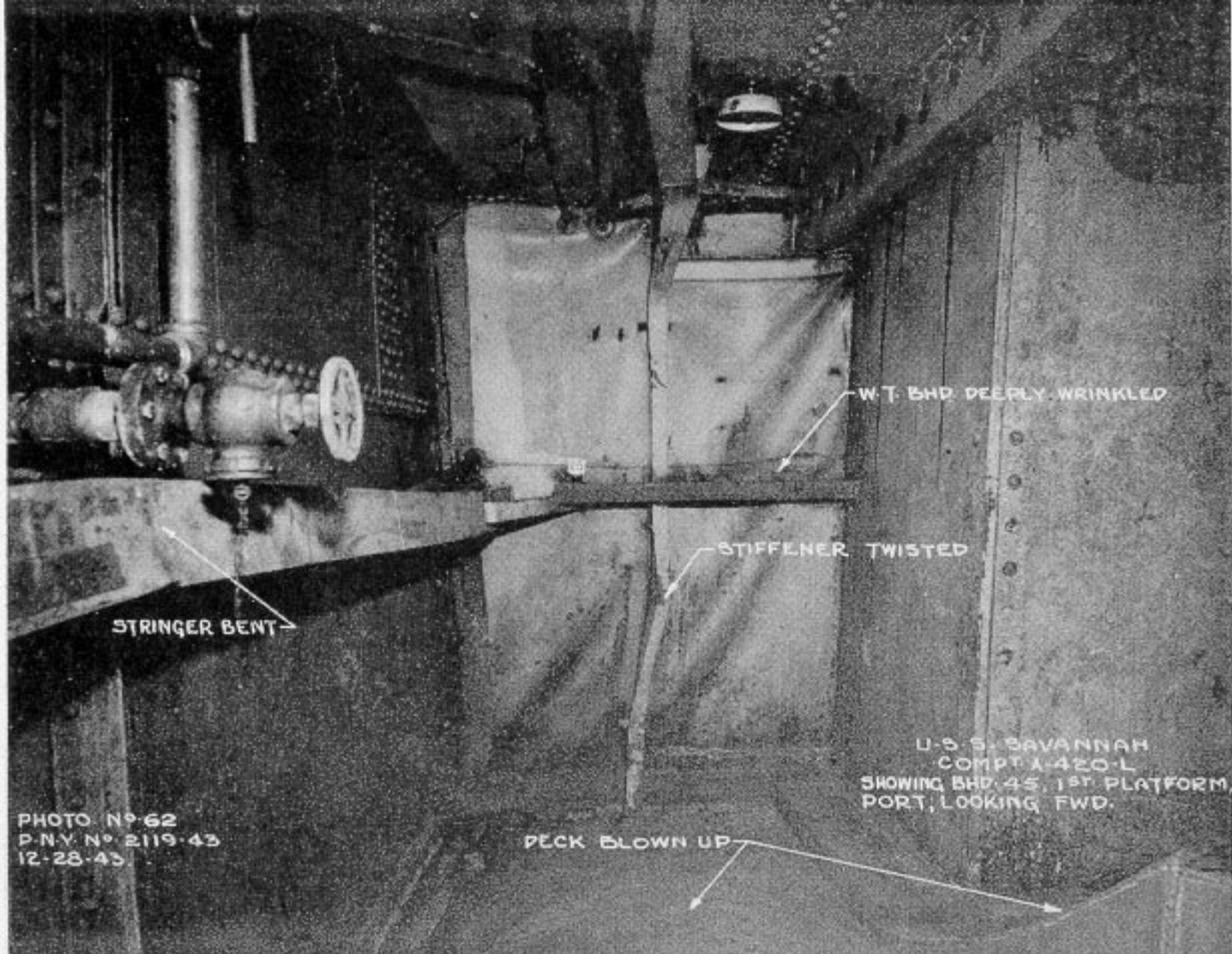


Photo 17: Compartment A-420-L, first platform, frames 45 to 49 port. Looking forward to bulkhead 45. Note excellent condition of armored trunk (1-1/2-inch STS) in right side. Lifting of armored deck (2-inch STS) extended to after edge of this trunk, see lower right corner.

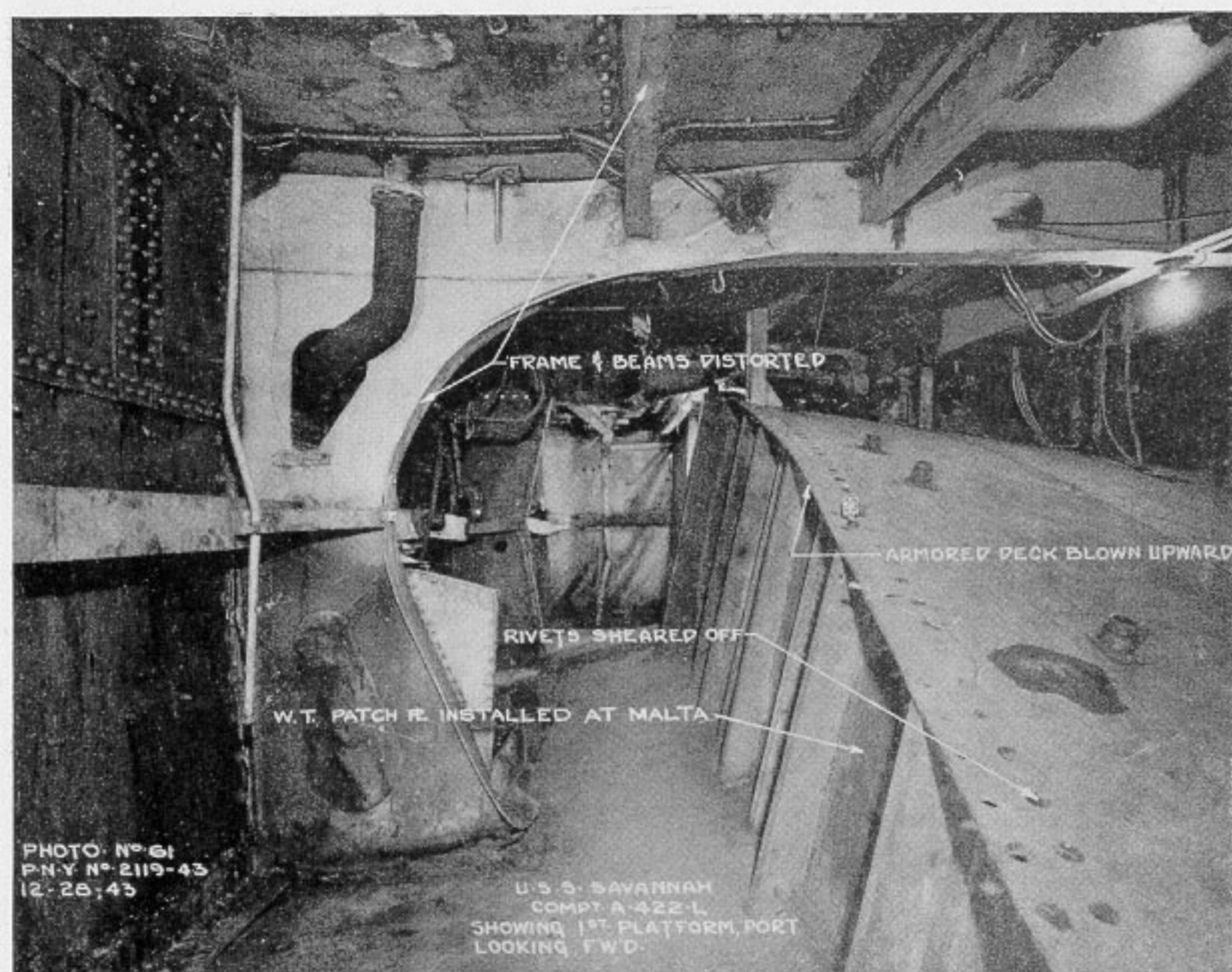


Photo 18: Compartment A-422-L, first platform, frames 49 to 56. Note temporary repairs which made this deck (2-inch STS) watertight for return to U.S.



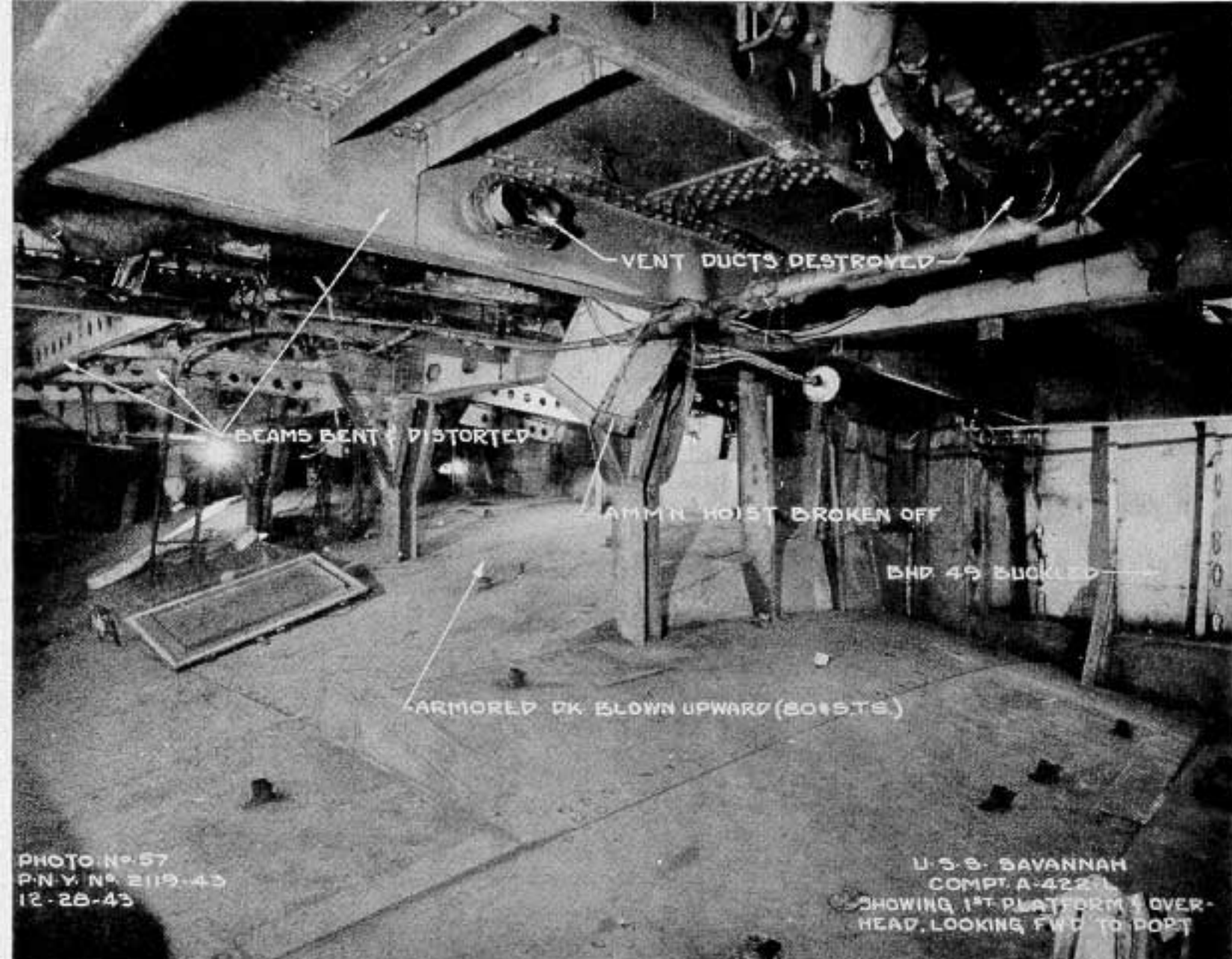


Photo 19: Compartment A-422-L, first platform, frames 49 to 56. Looking forward to bulkhead 49 and to port. The 2-inch STS deck effectively prevented major blast damage to the third deck above.

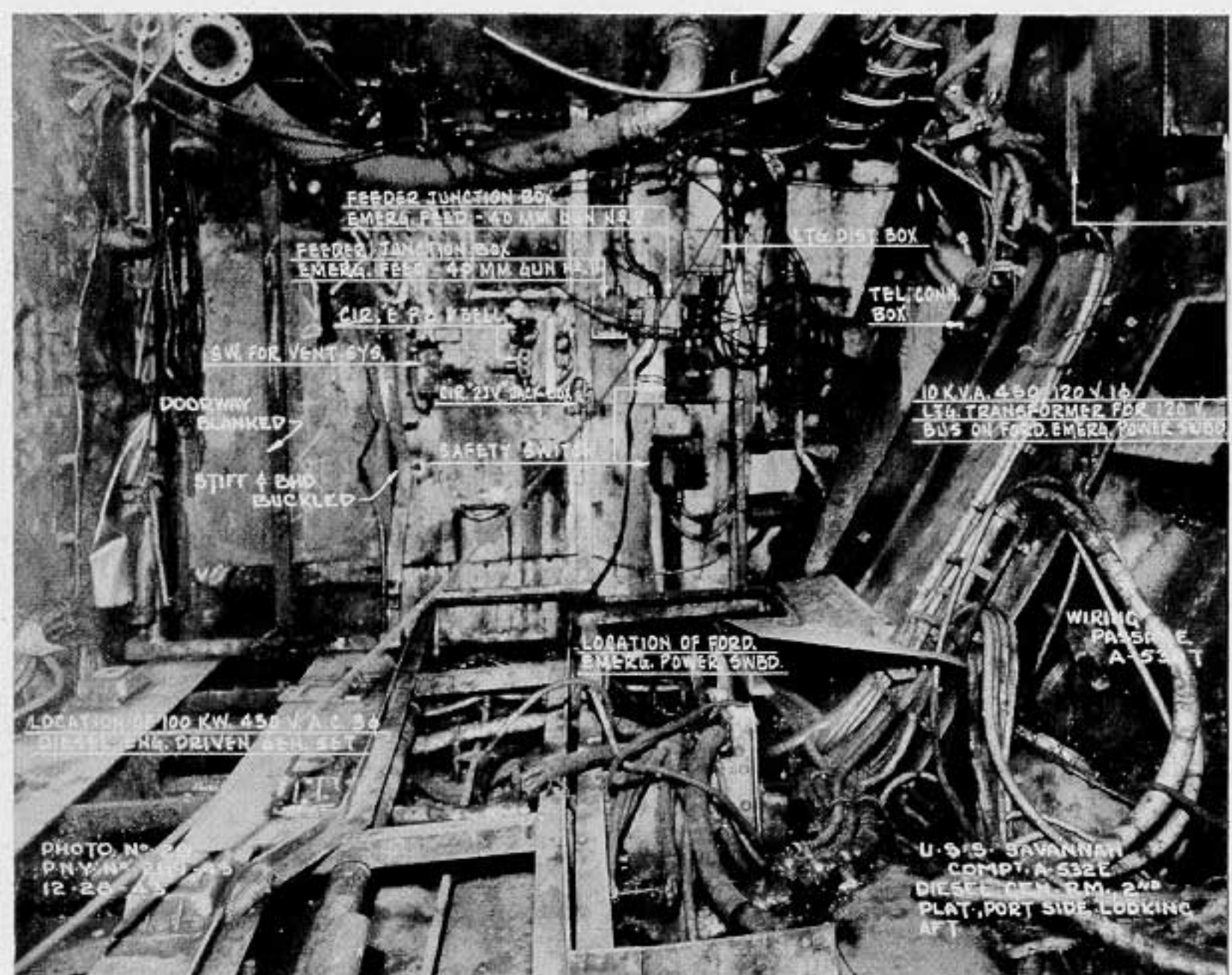


Photo 20: Diesel generator room A-532-E, second platform, frames 52 to 55-1/2 port. Looking aft.



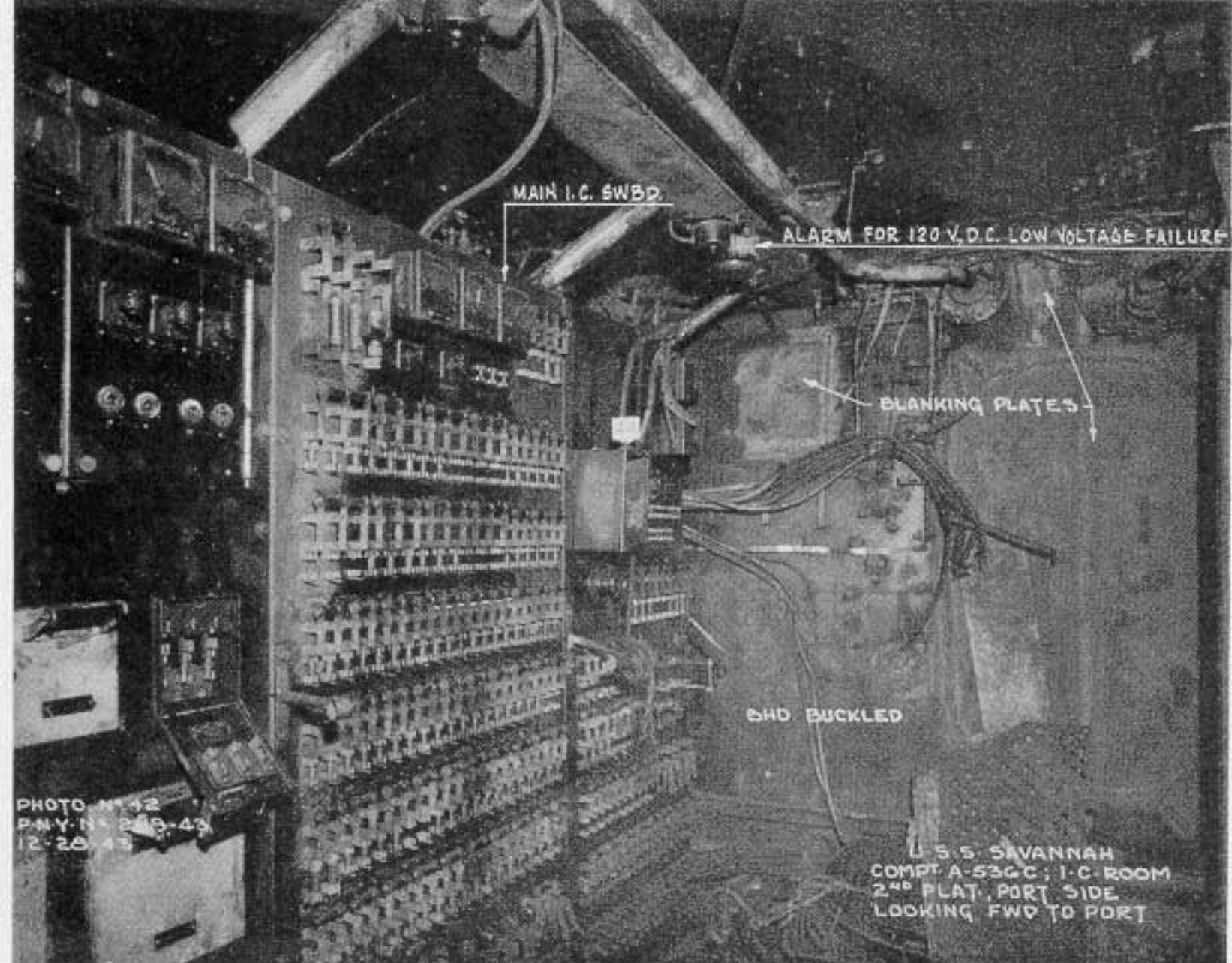


Photo 21: I.C. room A-536-C, second platform, frames 55-1/2 to 61, port. Looking forward to port. The door, which has been blanked, was in bulkhead 55-1/2 and was blown aft.

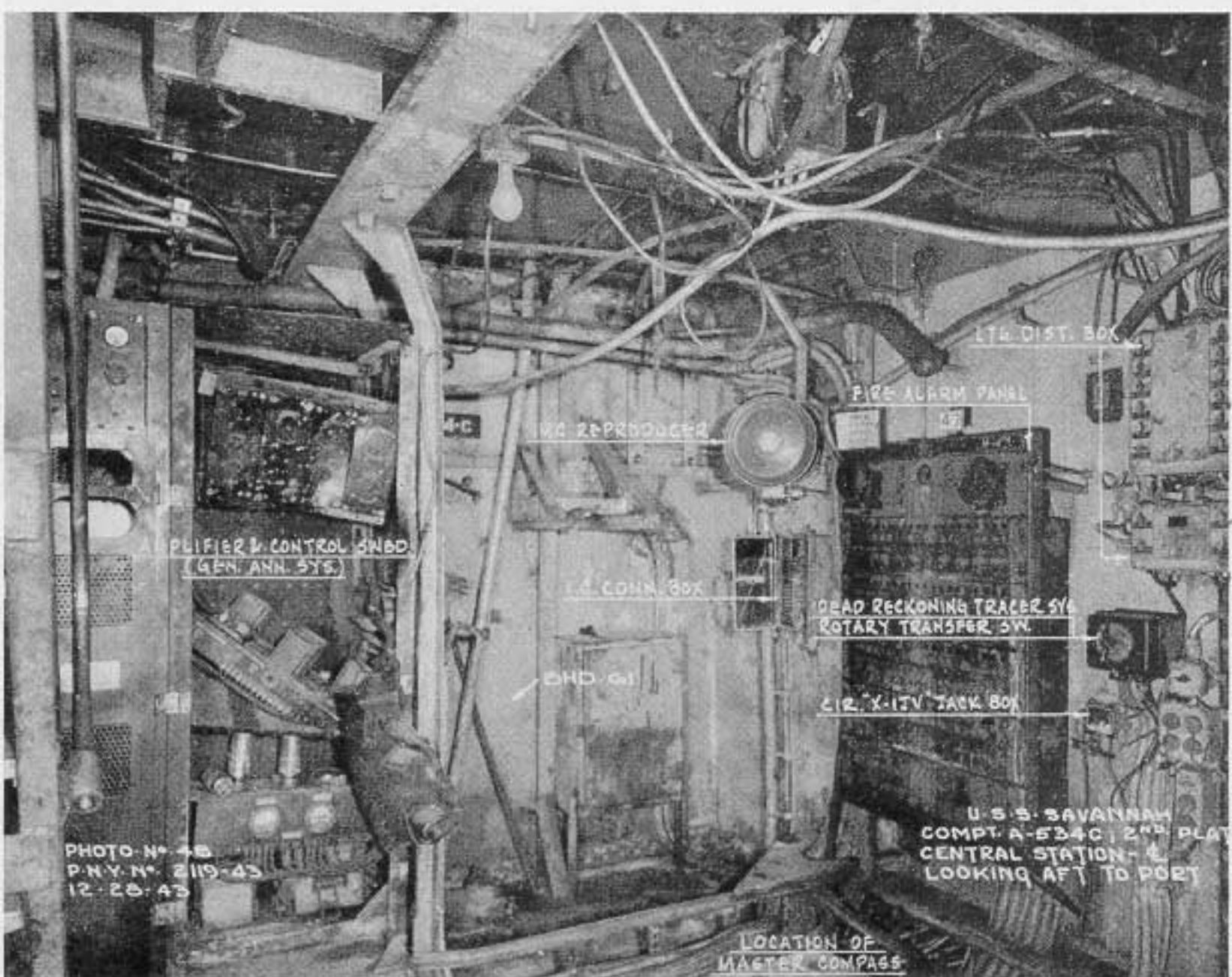


Photo 22: Central station A-534-C, second platform, frames 56 to 61, centerline. Looking aft and to port.