



Photo 31: One of two 6-inch/47 H.C. projectiles — that detonated in the gun room of No. 3 turret. Both are believed to have been stowed in the left projectile rack, 30 inches below the roof. Both went off 24 minutes after the bomb hit, during which time there was a fire in the gun room. Detonations were apparently low order. The left side plate of the turret was bulged outward in way of the stowage to a depth of 4 inches.



Photo 32: A 6-inch/47 H.C. projectile split open by impact. The filler did not detonate or burn. Recovered from the gun room of No. 3 turret.



Photo 33: 5-inch/25 ammunition recovered from wrecked magazines.



Photo 34: 6-inch/47 powder charges and cartridge tanks recovered from forward end of A-515-M. This picture is typical of all 6-inch powder recovered from A-515-M, A-507-M, A-511-M and A-512-M.



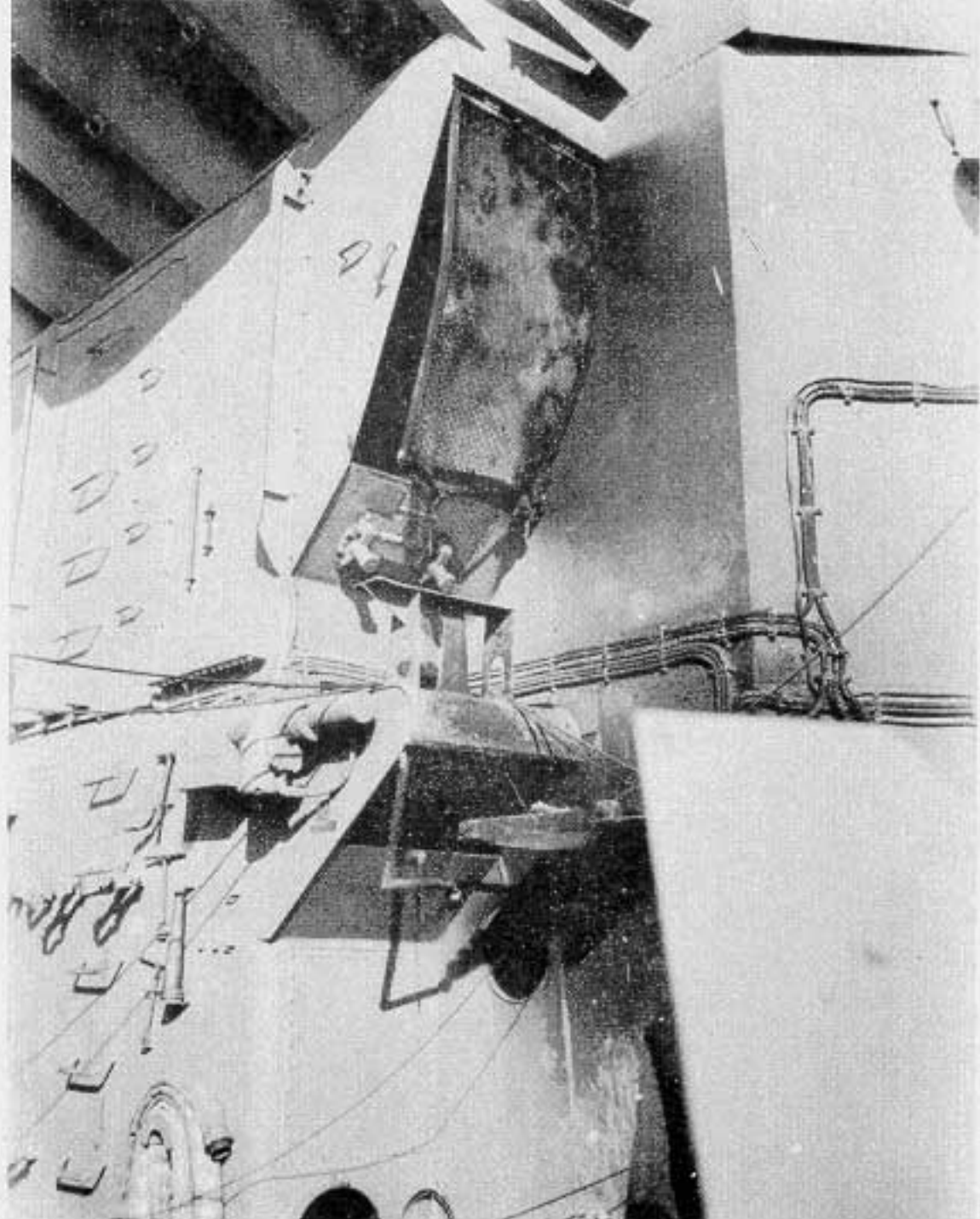


Photo 35: Blast effect to screen on vent trunk terminating at frame 55, above main deck. The lower vent trunk supplied air to A-533-C, second platform, demolished by the detonation.

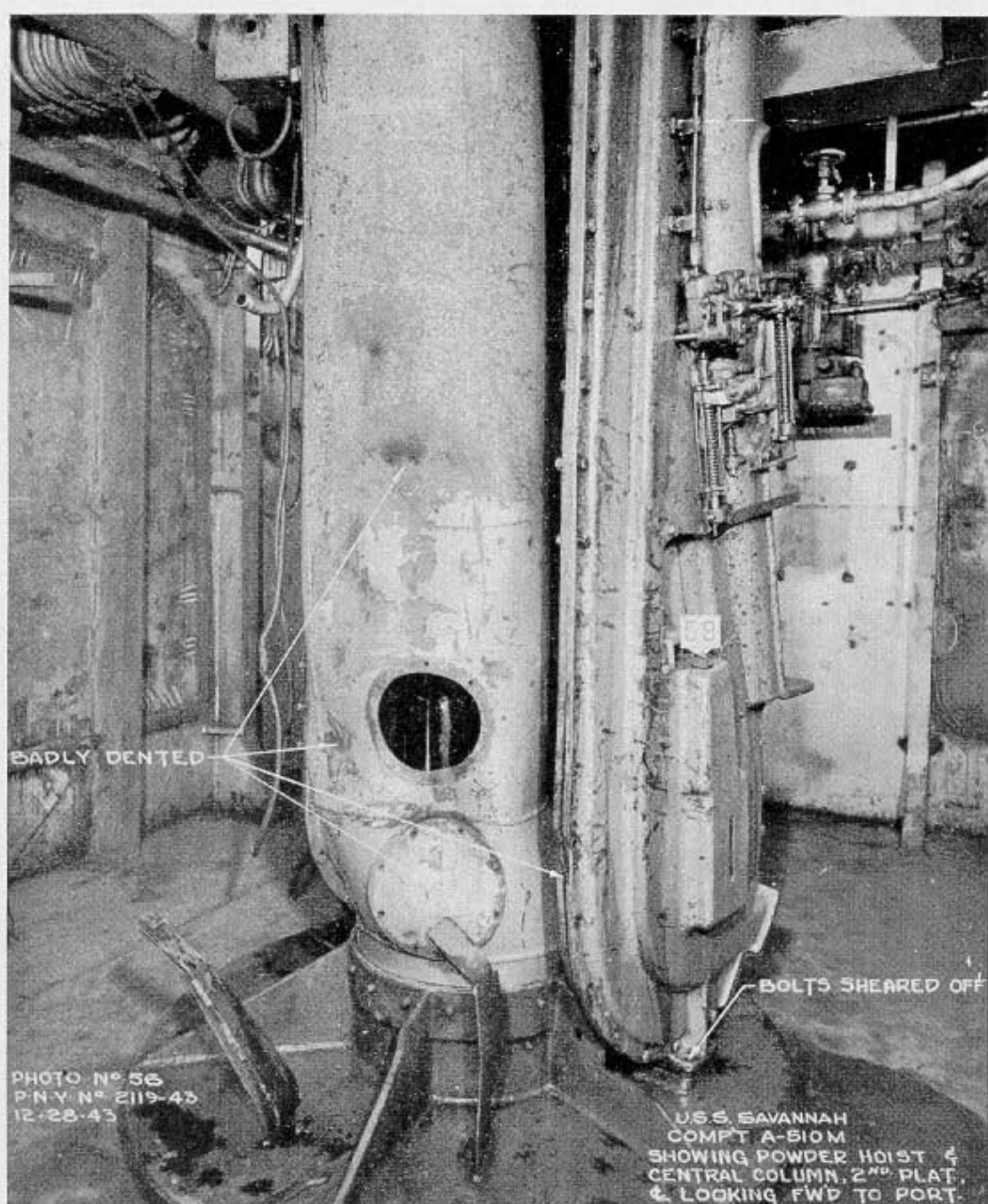


Photo 36: Results of fragment attack and blast on central column for No. 2 turret, in lower handling room A-510-M.

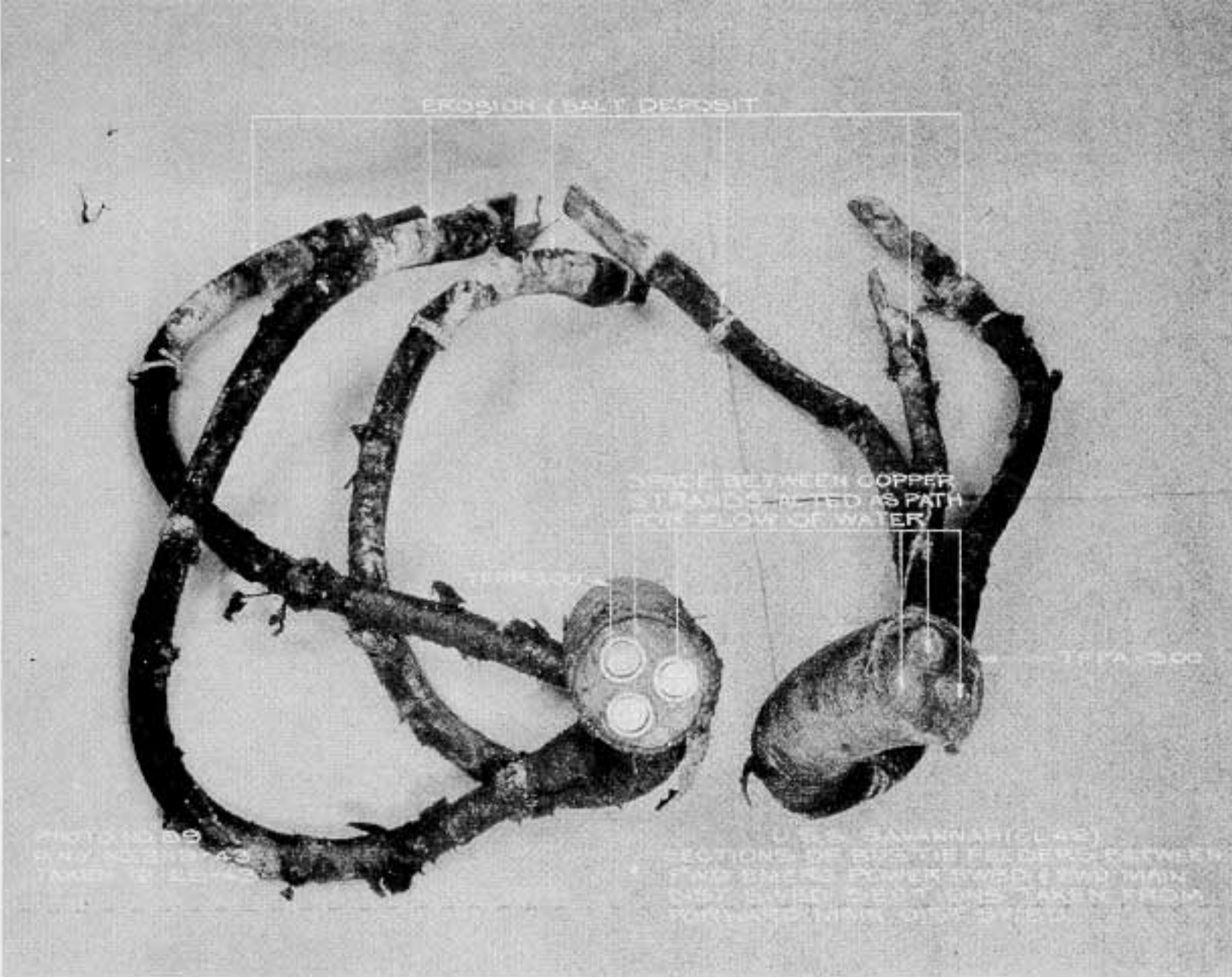


Photo 37: Electrical cables which permitted water to pass from forward emergency power switchboard (in A-532-E) to forward main distribution board (in forward engine room).